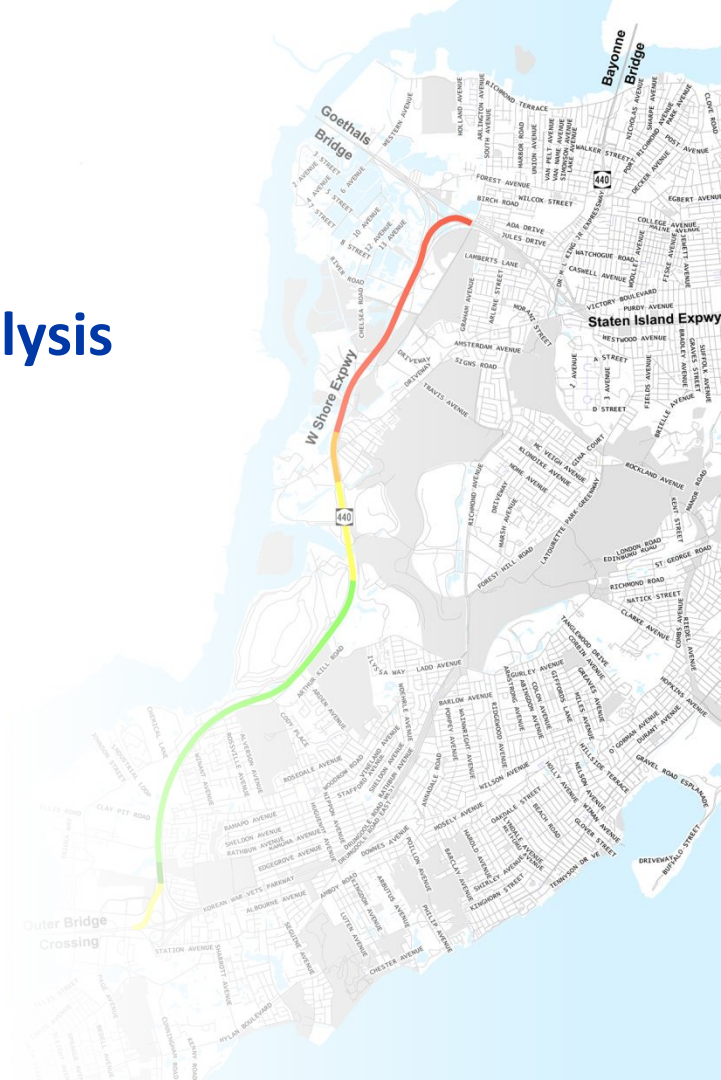




Staten Island West Shore Alternatives Analysis

Community Board Briefings

January, 2020



Agenda

- Introductions
- Study Overview
- Screening of Alternatives
- Short List of Alternatives
- Study Schedule
- Questions



STUDY OVERVIEW



Study Overview

- Perform credible and transparent evaluation of alternatives
- Identify reasonable alternatives
- Evaluate construction and operational feasibility
- Identify risks and opportunities
- Select a Preferred Alternative that can be incrementally implemented



Pop-Up Event at Richmond County Bank Ballpark

Study Goals

1 Improve transit service for West Shore residents

2 Support sustainable economic growth

3 Identify improvements consistent with land use patterns

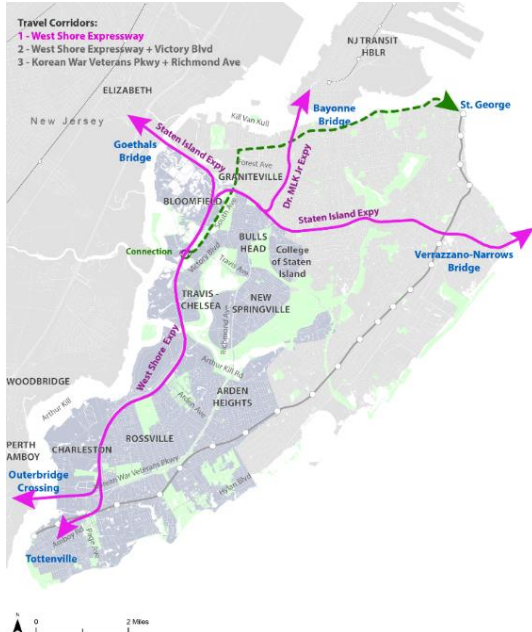
4 Provide cost-effective transit service improvements

5 Support and preserve recreational areas & natural environment

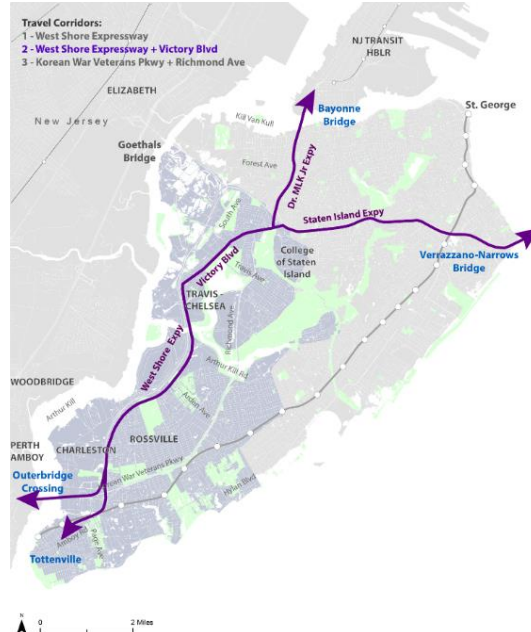
SCREENING OF ALTERNATIVES



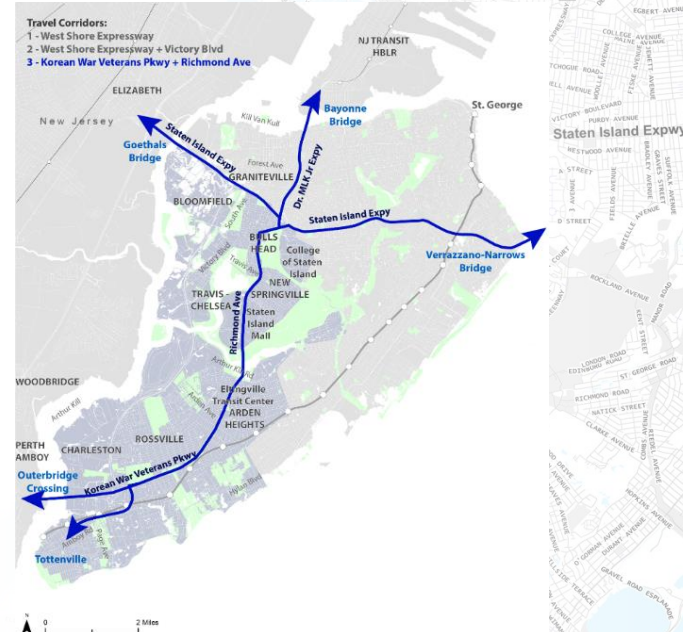
Three Travel Corridors – 18 Route Options



West Shore Expressway



West Shore Expressway +
Victory Boulevard



Korean War Veterans Parkway
+ Richmond Avenue

Initial Screening Factors and Results

3 Travel Corridors

18
Route
Options

- West Shore Expressway
- West Shore Expressway + Victory Boulevard
- Korean War Veterans Highway + Richmond Avenue

Constrained
right-of-way

Factor 1

Eliminated West Shore Expressway/Victory Boulevard travel corridor

Complexity of two
off-island crossings

Factor 2

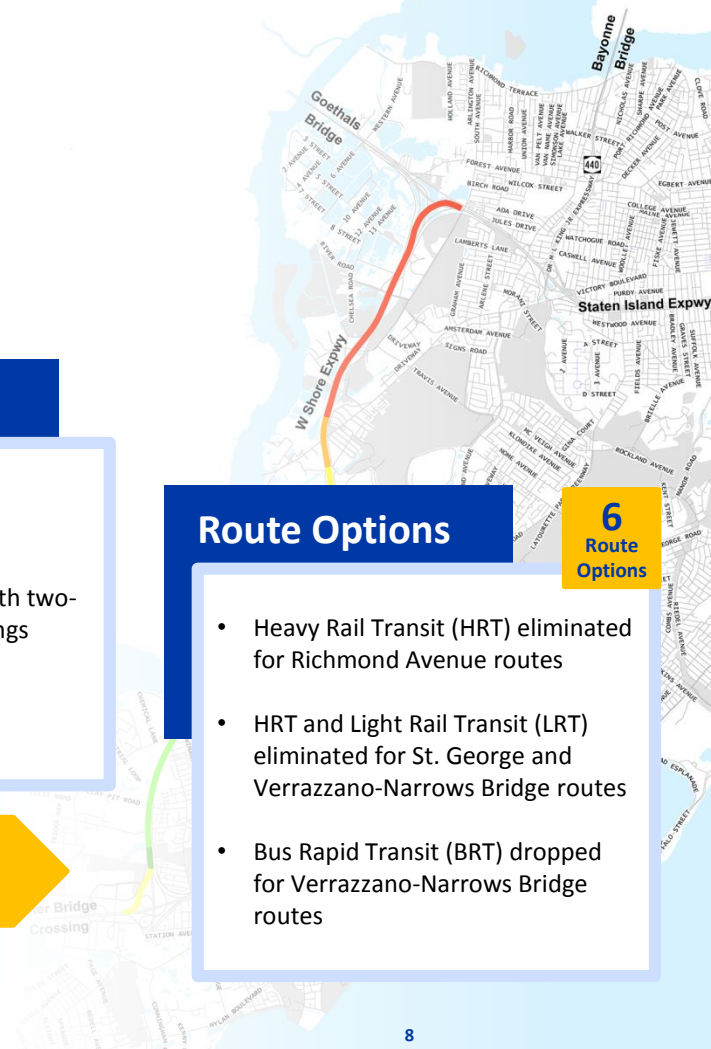
Eliminated routes with two-off-island crossings

Mode Screening

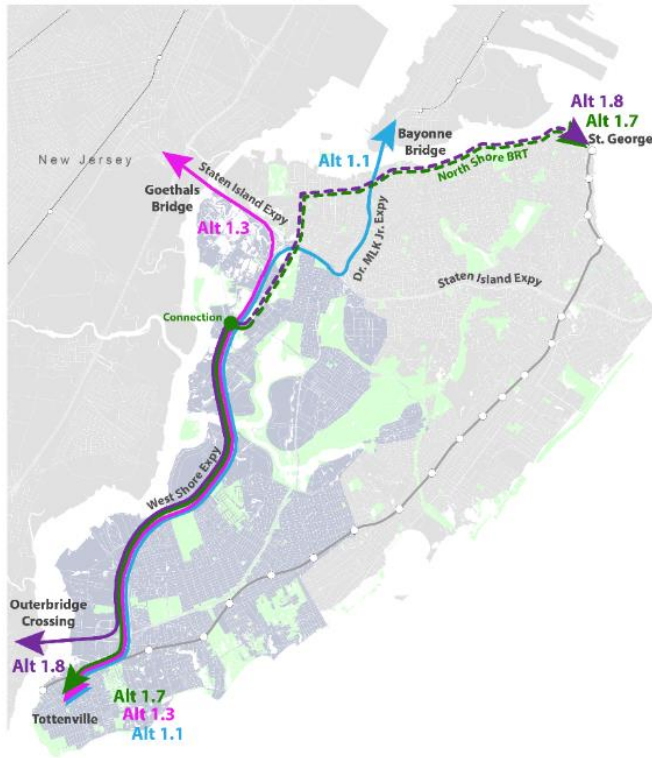
Route Options

6
Route
Options

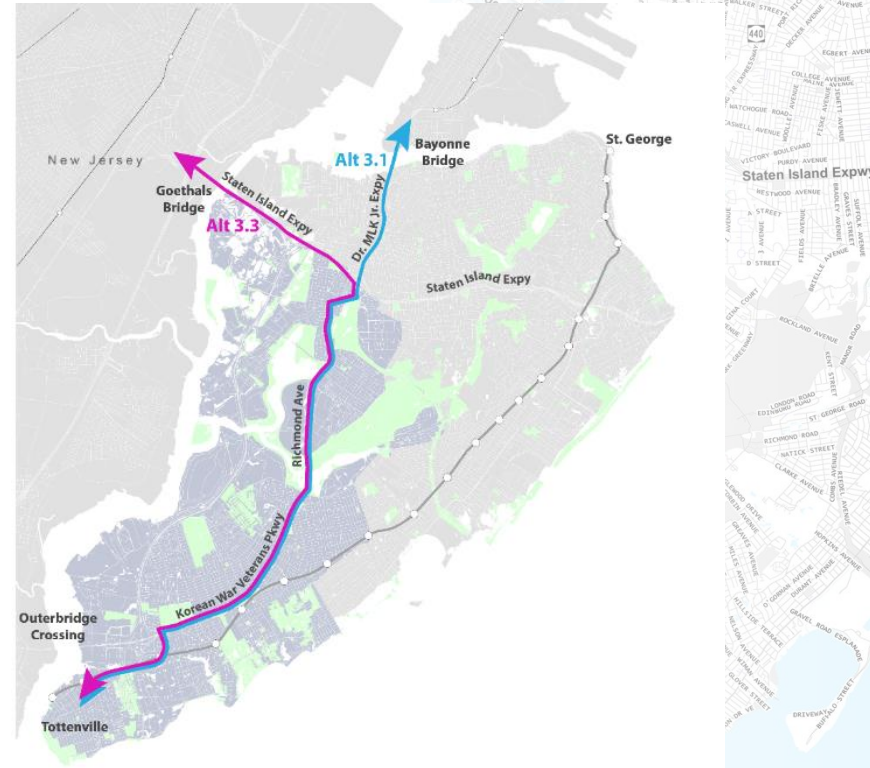
- Heavy Rail Transit (HRT) eliminated for Richmond Avenue routes
- HRT and Light Rail Transit (LRT) eliminated for St. George and Verrazzano-Narrows Bridge routes
- Bus Rapid Transit (BRT) dropped for Verrazzano-Narrows Bridge routes



Two Travel Corridors – 6 Route Options



West Shore Expressway



Korean War Veterans Parkway + Richmond Avenue

Mode Screening Factors

- Supported by existing and planned land use
- Substantial longer-term transit improvements that can be incrementally implemented
- Complements North Shore BRT



HRT Staten Island Railway



LRT Hudson-Bergen Light Rail



BRT CTfastrak

Screening of the Revised Long List of Alternatives

2 Travel Corridors

6
Route Options

- West Shore Expressway
- Korean War Veterans Highway + Richmond Avenue

Mode Screening

- Eliminated HRT
- LRT not precluded

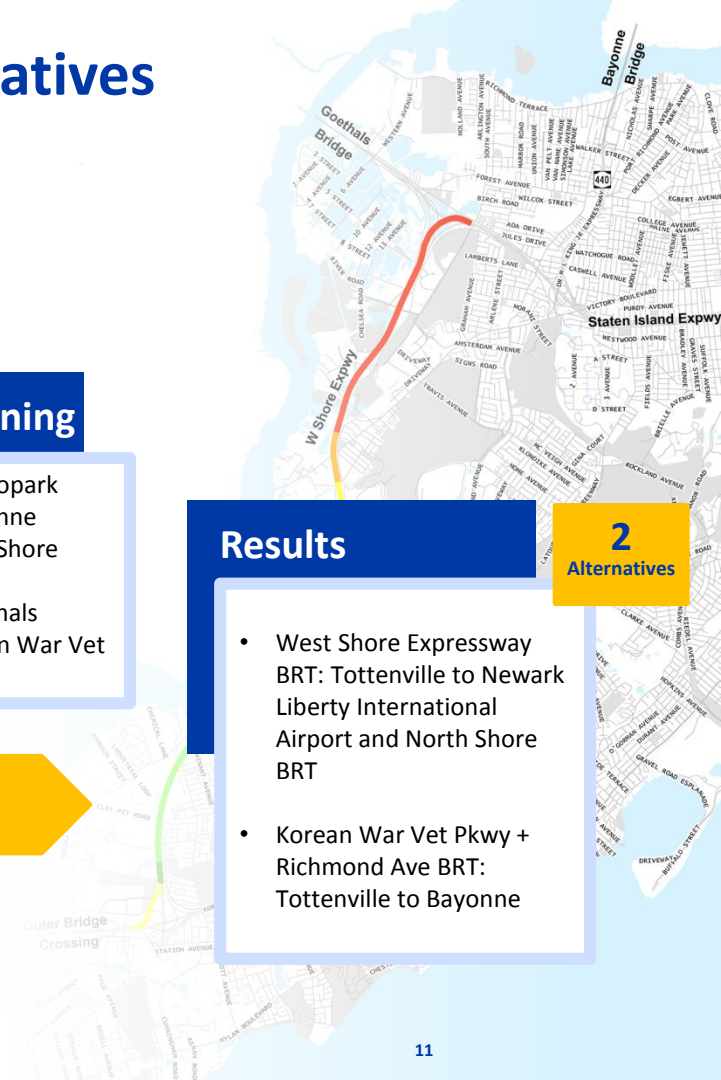
Corridor Screening

- Eliminated Metropark
- Eliminated Bayonne Bridge via West Shore Expressway
- Eliminated Goethals Bridge via Korean War Vet Pkwy

Results

2
Alternatives

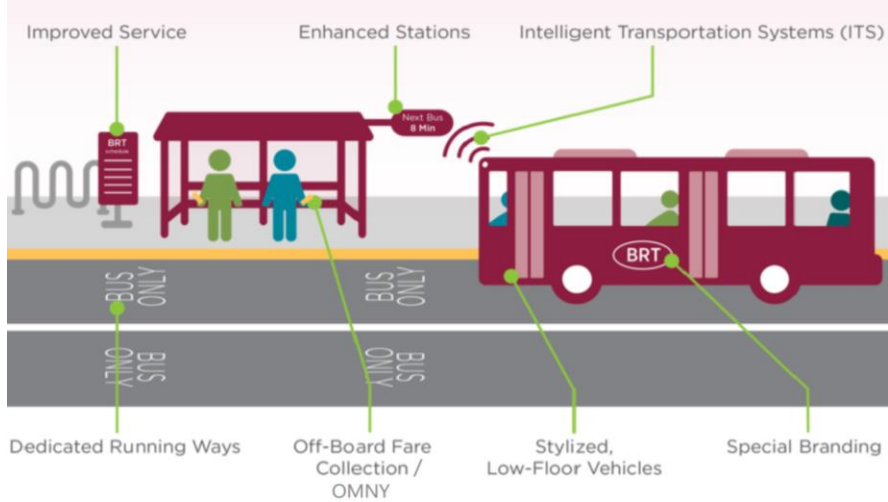
- West Shore Expressway BRT: Tottenville to Newark Liberty International Airport and North Shore BRT
- Korean War Vet Pkwy + Richmond Ave BRT: Tottenville to Bayonne



SHORT LIST ALTERNATIVES



Bus Rapid Transit



Viva Rapid Transit, Ontario



Wikimedia Commons
LA Metro Busway



Wikimedia Commons
CTfastrak

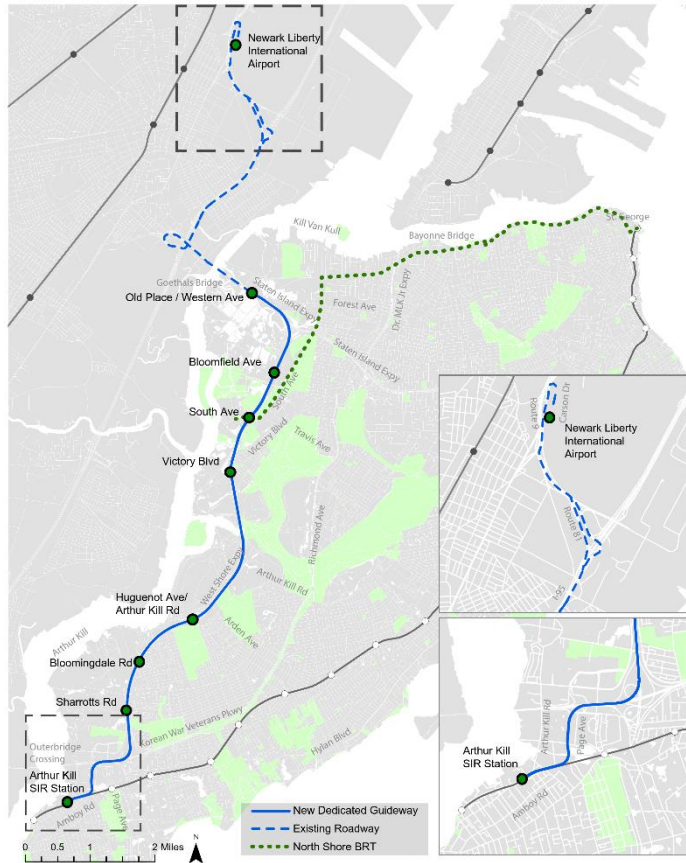


Google Street View, 2017
Crystal City Potomac Yard Transitway

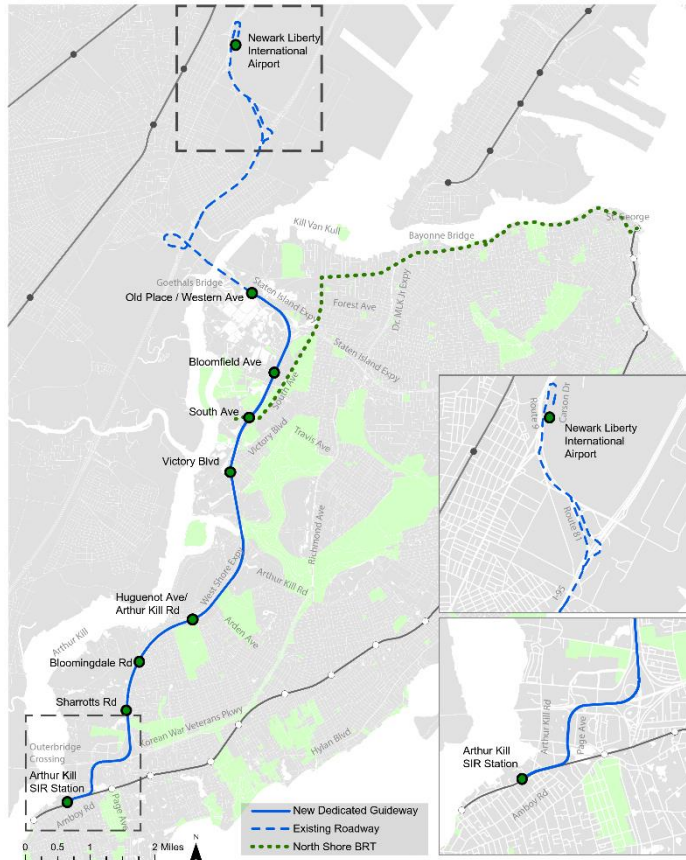
West Shore Expressway: Tottenville to Newark Airport

Modified Alternative 1.3

- BRT in a dedicated right-of-way (ROW) in median of West Shore Expressway between SIR Arthur Kill and South Avenue Stations.
- Serves Newark Liberty International Airport and St. George Ferry Terminal:
 - Connects at South Avenue to North Shore BRT
 - Dedicated BRT ROW to Old Place/Western Avenue with continued service in mixed traffic across Goethals Bridge via NJ Turnpike to Newark Liberty International Airport (AirTrain P1 Parking Lot)



West Shore Expressway: Tottenville to Newark Airport



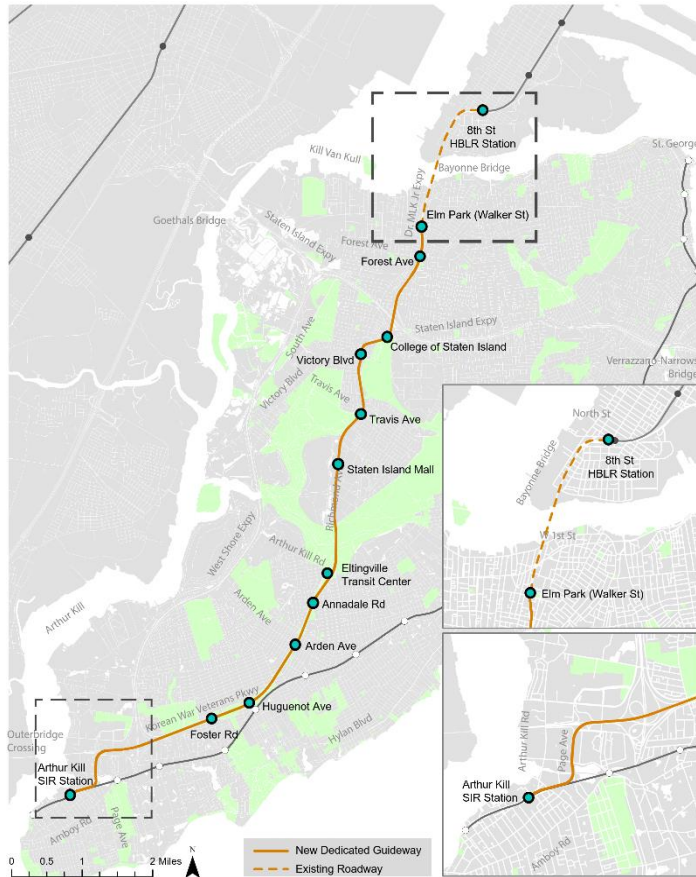
Modified Alternative 1.3

- Phased implementation
- Connects with North Shore BRT
- Serves Newark Liberty International Airport
- Connects to SIR
- Does not preclude LRT
- Does not require zoning changes
- Serves employment centers

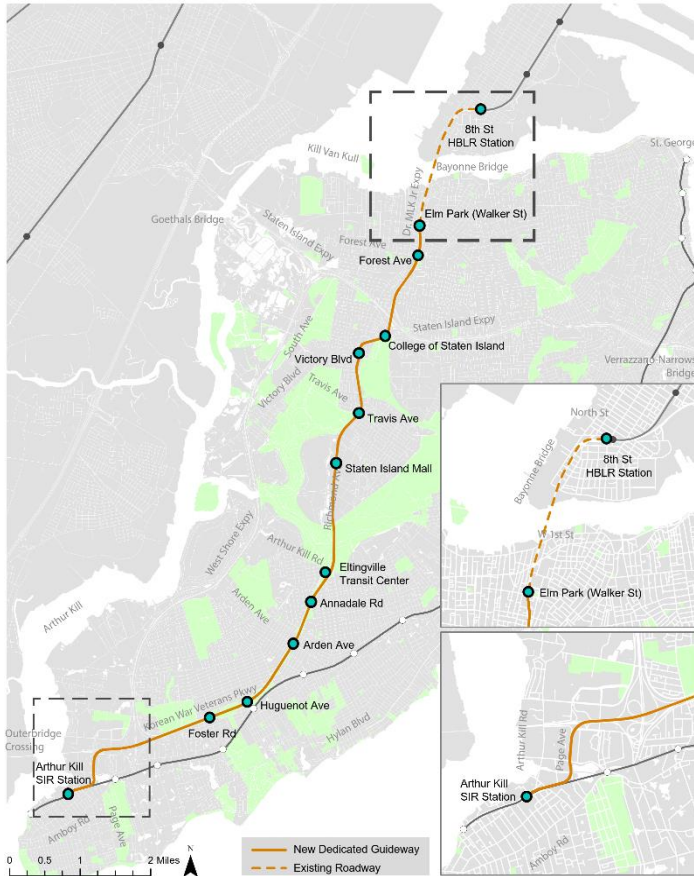
Korean War Vet Pkwy + Richmond Ave: Tottenville to Bayonne

Alternative 3.1

- BRT in a dedicated ROW in median of Korean War Veterans Parkway, Richmond Avenue, and Dr. Martin Luther King Jr. Expressway between SIR Arthur Kill and Elm Park Stations
- BRT in mixed traffic across Bayonne Bridge to connect with Hudson Bergen Light Rail (HBLR) 8th Street Station in Bayonne, NJ



Korean War Vet Pkwy + Richmond Ave: Tottenville to Bayonne

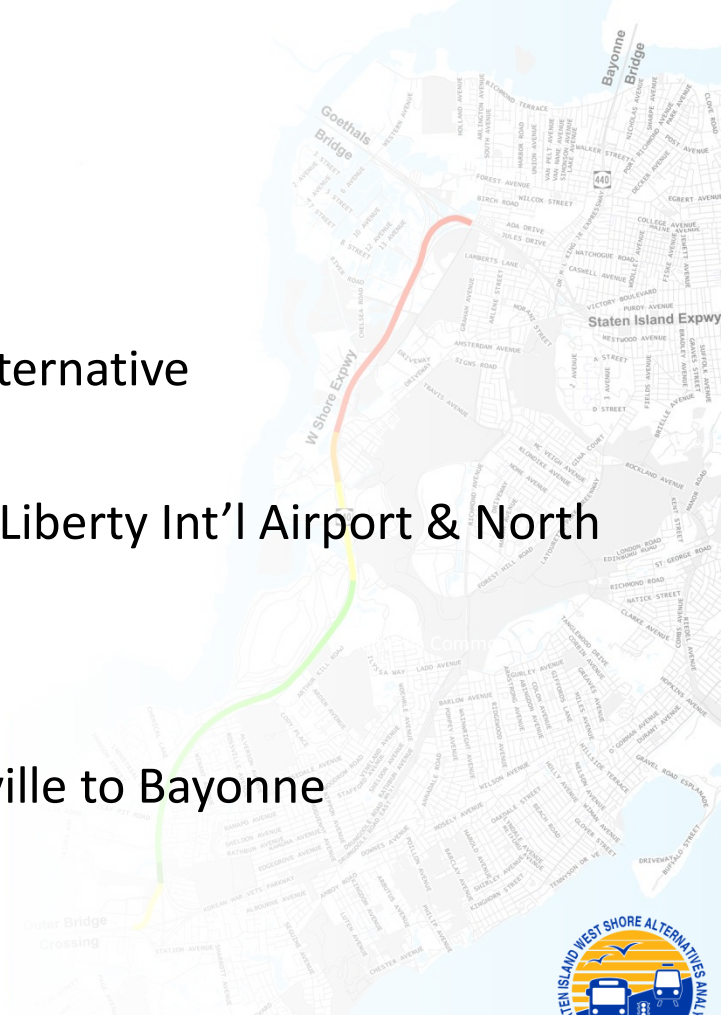


Alternative 3.1

- Phased implementation
- Connects to HBLR
- Connects to SIR
- Does not preclude LRT
- Does not require zoning changes
- Serves residential centers

Recommended Short List Alternatives

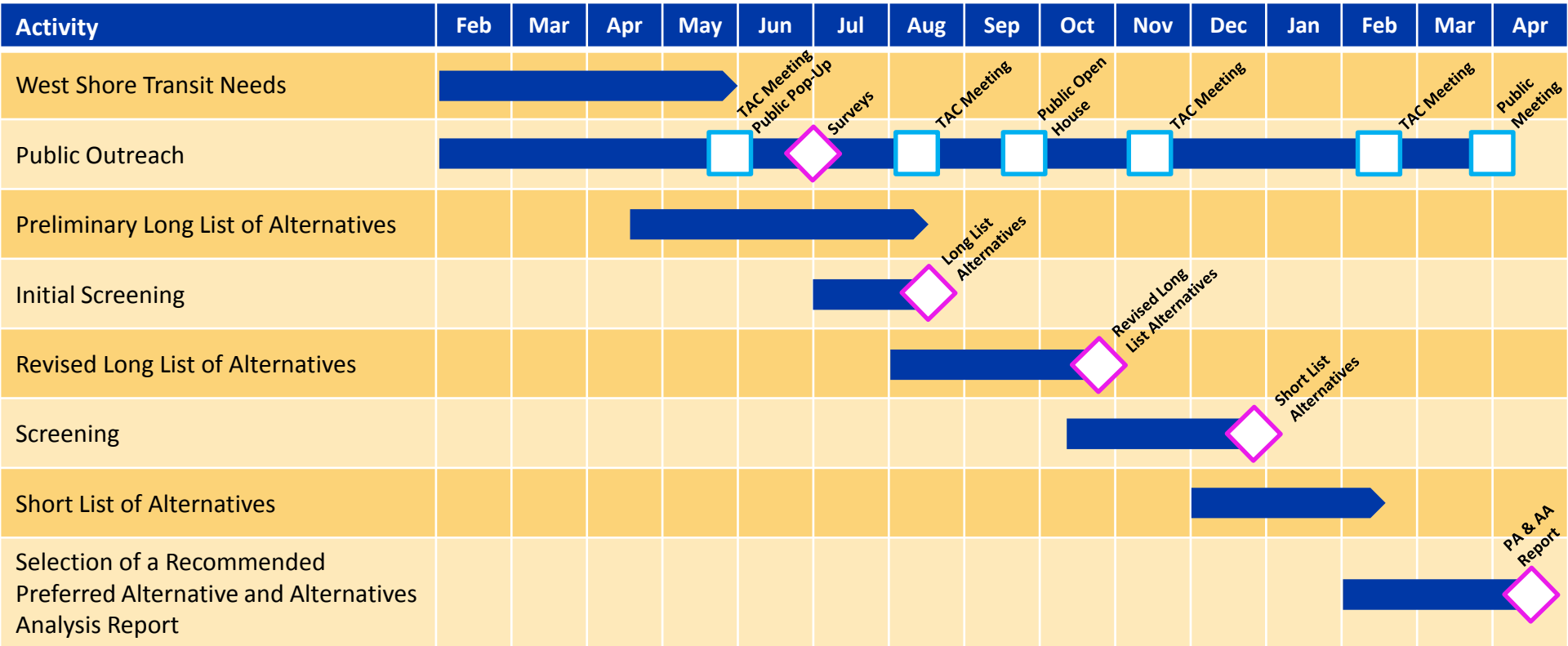
- No-Build Alternative
- Transportation Systems Management (TSM) Alternative
- West Shore Expressway: Tottenville to Newark Liberty Int'l Airport & North Shore BRT
 - Modified Alternative 1.3
- Korean War Vet Pkwy + Richmond Ave: Tottenville to Bayonne
 - Alternative 3.1



STUDY SCHEDULE



Timeline



Public Outreach Event
 Key Milestone Event

QUESTIONS?

